

Building an Azure Data Analytics Platform

End-to-End

Paul Andrew | Technical Architect in Azure CoE



Mr Paul Andrew
Consulting Ltd



@MrPaulAndrew



In/MrPaulAndrew

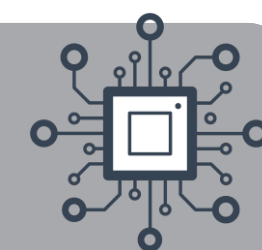


MrPaulAndrew.com



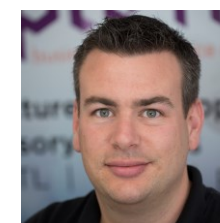
c/MrPaulAndrew

About Me



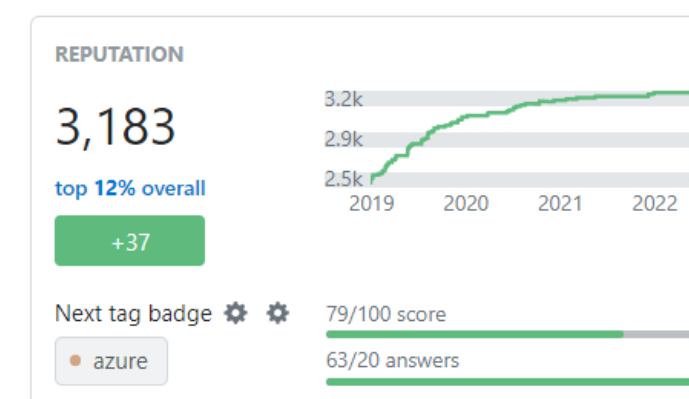
Paul Andrew is a Microsoft Data Platform MVP and Technical Architect within the Avanade Centre of Excellence team, with over 15 years' experience in the industry, working as an engineer and solution architect. Day-to-day Paul is accountable for delivering enterprise grade data insights to international organisations where he wields the complete stack of Azure Data Platform resources. Paul leads delivery teams around the globe implementing the latest design patterns, creating architectural innovations, and defining best practice to ensure technical excellence for customers across a wide variety of industry verticals. Paul is **passionate about technology**, which is demonstrated in the community, he speaks at events and shares his knowledge gained from real world experience through his blog. Paul maintains the view that his job is also his hobby and doesn't ever want to take his fingers off the developer's keyboard while maintaining a growth mindset.

Husband, father of three, Star Wars and Lego fan. Run's, swims, plays darts. Enjoys doing geeky things to support home automation and electricity generation.

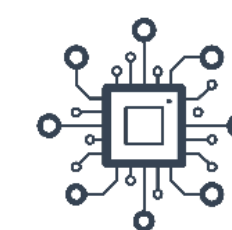


mrpaulandrew.com/about

Summary



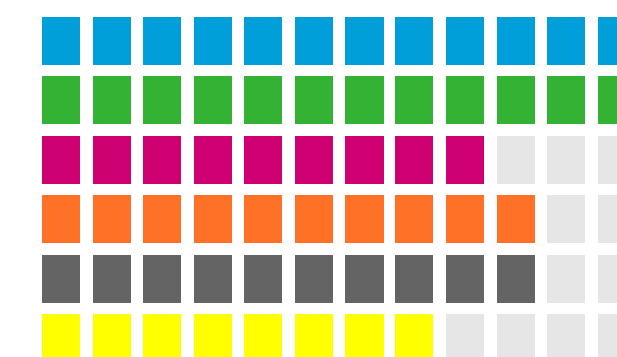
Talks Delivered	Total Audience	Average Audience	Countries	Cities	Event Types
160	10K	63.29	14	34	38

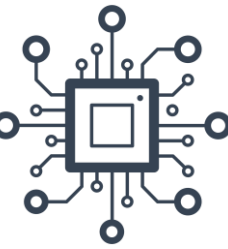


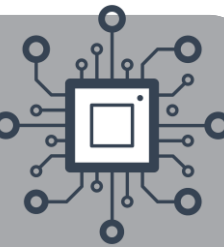
Mr Paul Andrew
Consulting Ltd

- Banking
- Mining
- Retail
- Gaming
- Manufacturing
- Software Development
- Healthcare

Technical Leadership
Data Platform Architecture
Solution Delivery Lead
Data & Test Engineer
Data Strategy
Release Management





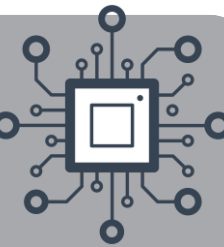


What do you want to get out of this session?

[menti.com](https://www.menti.com)

2274 6681





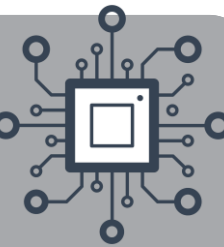
Azure Tenant Access Request

<https://forms.office.com/e/70Xv25jndN>





Agenda



1. An Evolution of Data Platform Architectures in Azure

- Lambda
- Kappa
- Delta Lake
- Data Mesh

Theory & Foundations

2. An Introduction to Azure Data Factory

- Pipeline Fundamentals
- Integration Runtimes
- Data Transformations

3. An Introduction to Azure Synapse Analytics

- Compute
- Storage
- Orchestration

Tooling

4. An End to End Data Analytics Solution in Azure

- Design
- Extract
- Transform
- Load

Design & Architecture

5. Build a Solution Yourself

- Extract
- Transform
- Serve & Consume

Getting Hands On



<https://github.com/mrpaulandrew>

Building-an-Azure-Data-Analytics-Platform-End-to-End

Public

Training workshop content on building a data analytics platform using Microsoft Azure Resources.

☆ 0

📄 BSD-3-Clause

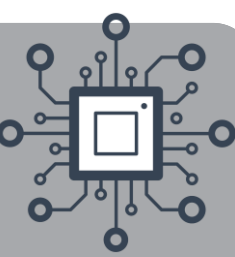
🔗 0

🕒 0


🔗 0

Updated on Feb 3





<https://build.microsoft.com>


 Microsoft | Microsoft Build Sessions ▾ Join us in Seattle Featured Partners ▾ Support ▾ [Register now](#) [All Microsoft ▾](#)

Join us in Seattle for Microsoft Build!

In Seattle
Pre-day workshops: May 22, 2023
Event dates: May 23–25, 2023

Online
May 23–24, 2023 PDT

[Register now](#)



Summit at the Seattle Convention Center